

# SOFTOPPER®

## Installation Instructions

### Blazer 1st Generation

**Please read instructions thoroughly before starting installation**



**\*\*Remove all contents of the Softopper carefully to protect from scratches.\*\*  
Windows scratch easily! Keep protective layer placed between them when they are stacked.**

**Estimated Installation Time: 1-2 hours**

**Beginning Note:** It is easiest to do the initial installation in warmer temperatures. The fabric of the top is at its tightest when it is new. Installing it in warmer temperatures initially will ensure that the fabric is easier to work with. The fabric of the top will relax slightly with time and become easier to put on.

## **\*\*Safety Notes\*\***

**Please read the following before driving with the Softopper installed:**

1. It is highly recommended that the provided boot cover/storage bag is used when the topper is in its retracted position. This will prevent the top from catching in the wind and extend the longevity of the top.
2. This product is designed to shield the occupants from ordinary weather conditions.
3. DO NOT rely in any way on the soft top to contain occupants within the vehicle, or to protect against injury or death in the event of an accident or a roll-over.
4. This top will not protect the occupants from falling or flying objects. Never operate vehicle in excess of manufacturer's recommendations or specifications.

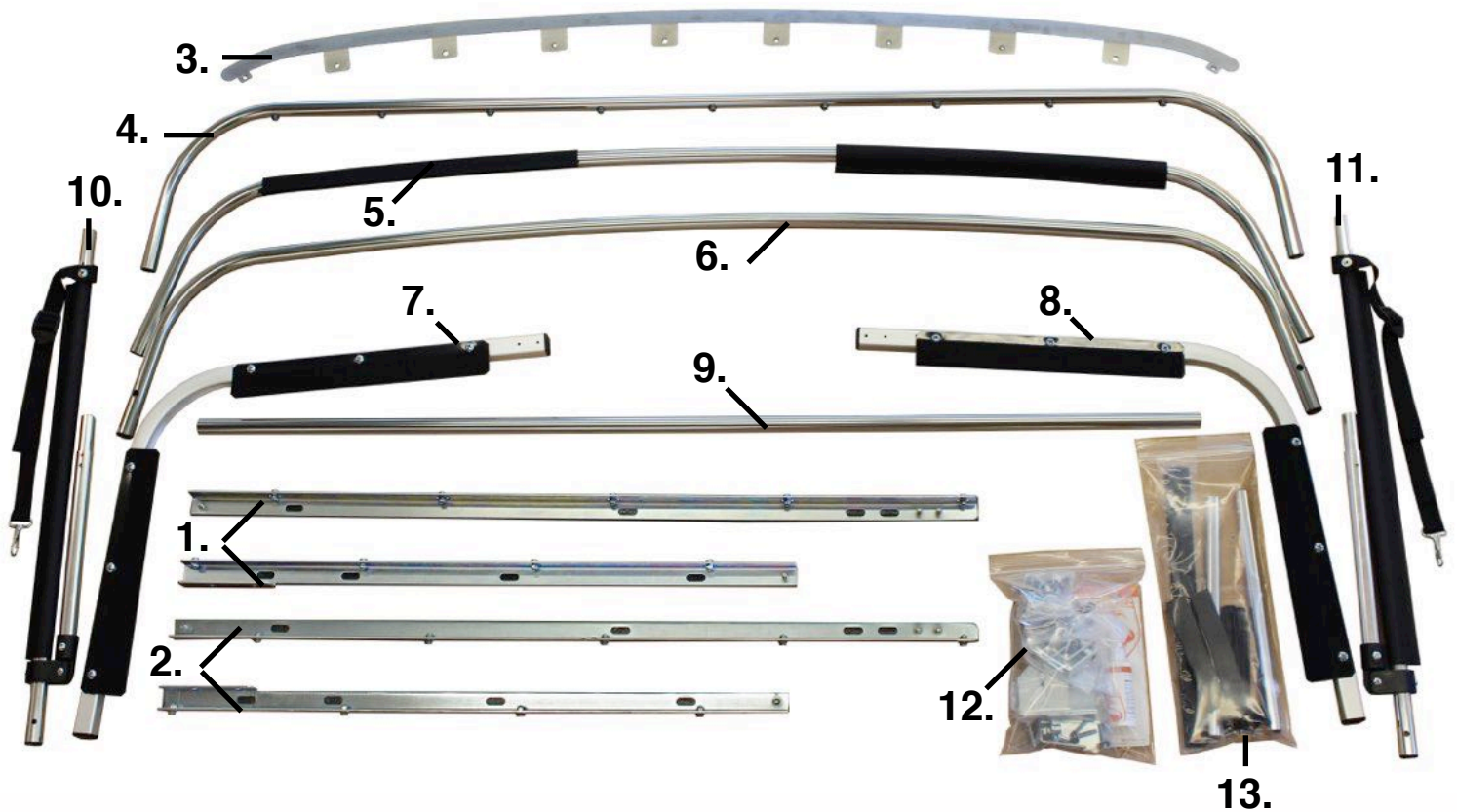
### **Tools needed for installation:**

- 7/16" Socket or Wrench
- 1/2" Socket or Wrench
- #2 Phillips Screwdriver
- #3 Phillips Screwdriver
- 9/64" Drill Bit
- #2 Phillips Driver
- Drill
- Pencil
- Tape Measure

### **Table of Contents**

1. Inventory.....	3
2. Hardware Installation	
1. Bedrails.....	4
2. Door Surrounds.....	8
3. Header Bar.....	12
4. Door Surround Cross Bar.....	14
3. Folding Frame Assembly and Installation....	15
4. Soft Top Canopy Installation.....	17
5. Retracting the Soft Top.....	22
6. Optional Driving Configurations.....	23
7. Softopper Care and Maintenance.....	24
8. Warranty Information.....	25

## Your Softopper Kit Includes the Following Pieces

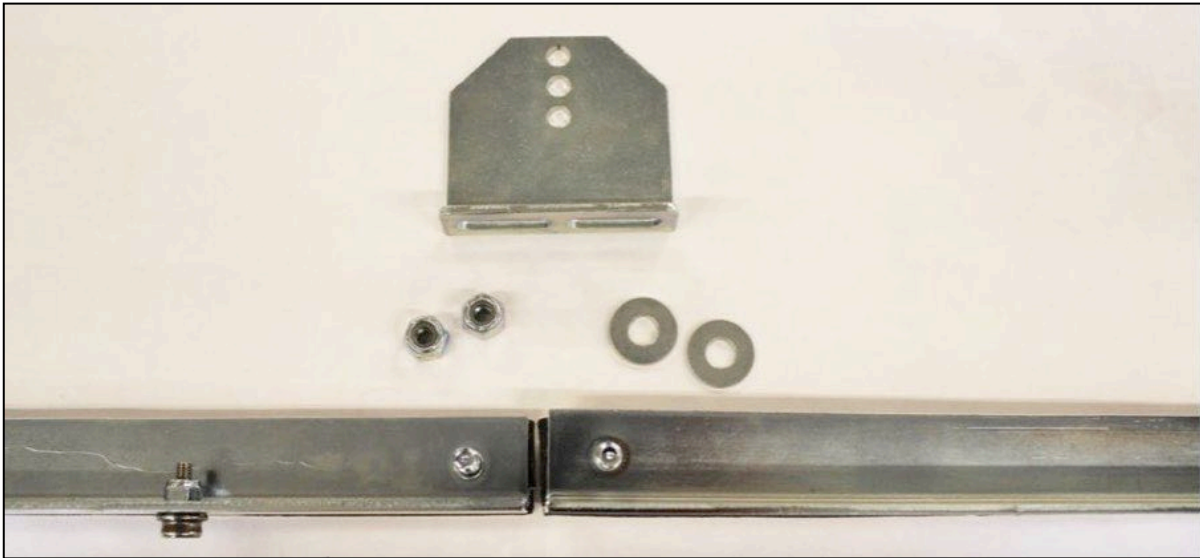


1. Driver Side Bedrail Front and Rear
2. Passenger Side Bedrail Front and Rear
3. Header Bar
4. Rear Cross Bar
5. Front Cross Bar
6. Door Surround Cross Bar
7. Driver Side Door Surround
8. Passenger Side Door Surround
9. Rear Bar
10. Driver Side Folding Frame
11. Passenger Side Folding Frame
12. Kit Bag #1
13. Kit Bag #2
14. Softopper Canopy (not depicted above)

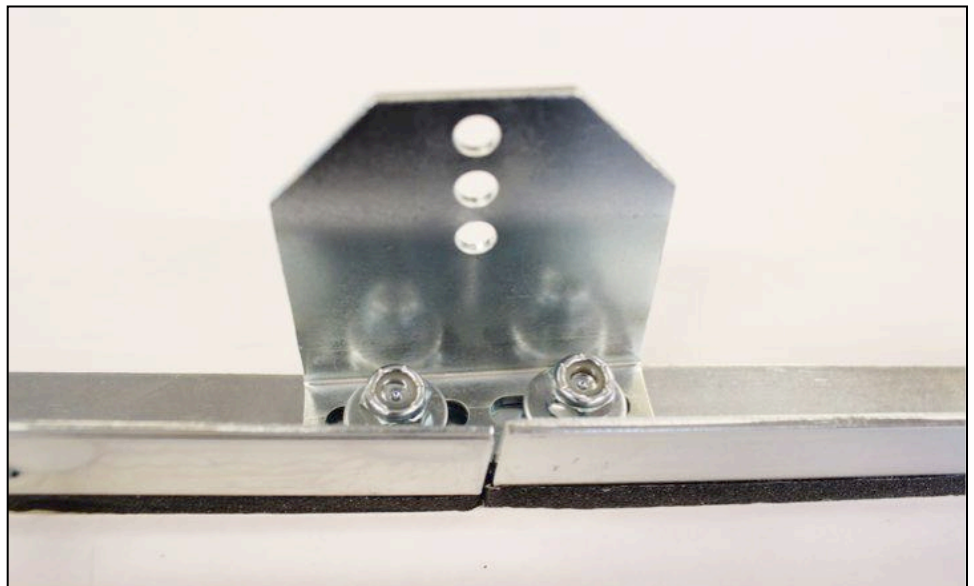
## Bedrail Installation

**\*\*Note\*\* Colored instructions are available on our website, [softopper.com](http://softopper.com), under “Installation Instructions”.**

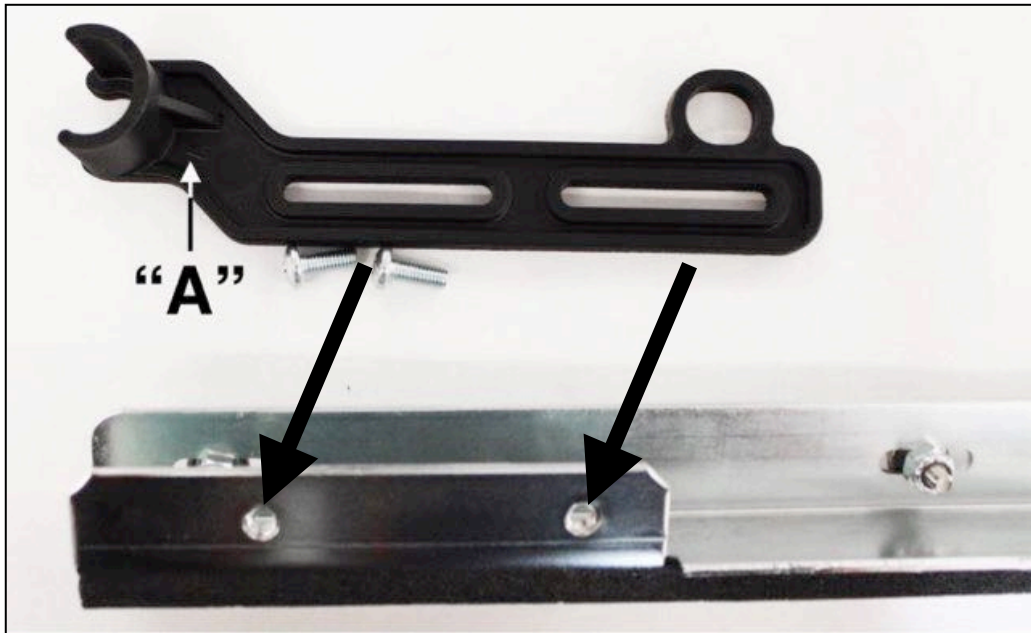
1. Locate the front and rear driver side bedrails. There is a sticker which designates the driver side front bedrail.
2. Remove the white protective paper from the bottom of the bedrails that is covering the weather stripping. The weather stripping is NOT ADHESIVE, and will not stick to your vehicle.
3. In Kit #1, locate the bag containing 2 Pivot Point Brackets, 4 nuts, and 4 washers.
4. On a clean, level surface join the driver side front bedrail piece and the rear bedrail piece with the slotted pivot point brackets as shown. **\*\*Note:** your pivot bracket has the pivot pin and safety ring already installed.



5. For proper alignment, every bolt should be centered in the slots, and the snaps on the bedrails should face the same direction. Use a straight edge to also make the bedrails straight, and then tighten the 4 nuts and washers onto the threaded studs using a 7/16” socket.
6. Repeat with the remaining passenger side bedrails and hardware.



7. In Kit #2, locate the 2 black plastic rear bar retainers and hardware and the 4 larger screws.
8. The plastic retainers are marked "A" and "B". "A" is the driver side piece and "B" is passenger side. The retainer slot should face in and the ring should be up.
9. Using the 4 screws and a #2 Phillips screwdriver, mount the rear bar retainers to the threaded holes on the back end of the **REAR** bedrails as shown. Center the screws in the slots and fasten securely. Save the 2 remaining self-drilling screws for later in the installation process.



10. In Kit #1, locate the bag containing the 2 Lower Door Surround Brackets, 4 nuts, and 4 washers.
11. Mount the driver side bracket to the 2 standoffs at the front of the driver side bedrail as shown by placing the bracket over the standoffs, then one washer and one nut on each standoff. Only finger tighten the nuts; the brackets will need to be adjusted later. \*\*The bracket will tilt inward slightly. Repeat on passenger side bedrail.

**Driver Side Bracket**



**Passenger Side Bracket**

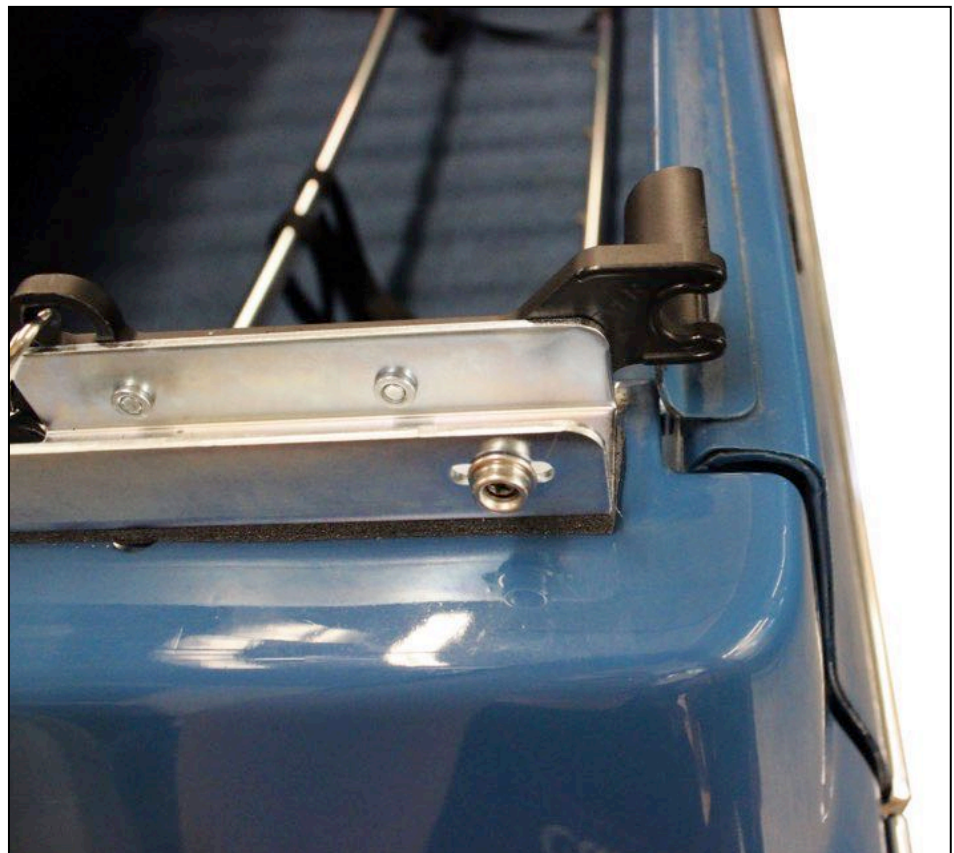


12. Place the Driver Side Bedrail atop the driver side rail of the vehicle with the door open. Align the front of the bedrail flush with the front of the rail right where the door closes as shown. The rear of the bedrail should end up placed as shown. The snaps should be facing out, and the black plastic rear bar retainer should be facing in and up as shown.

13. In Kit #1, locate the bag containing 6 bolts, 6 nuts, and 12 washers.

14. Place 3 bolts with one washer each down through the holes in the bedrail and weather stripping that correspond to the holes already on your vehicle. \*\*The bedrails have extra holes to accommodate double and single walled vehicles. We have provided extra nuts and washers just in case your vehicle does not have the originally threaded parts under the side rails.

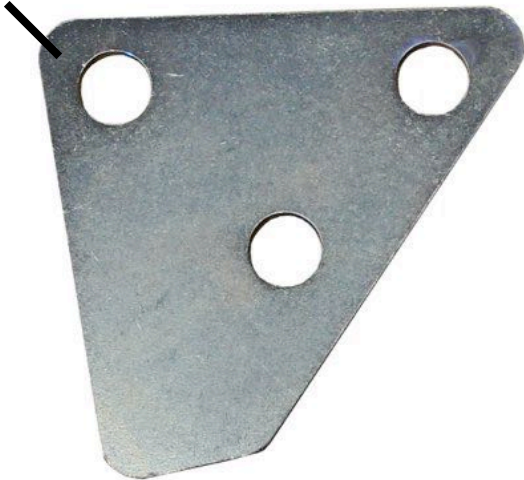
15. Keeping the front of the bedrail aligned with the front of the side rail, using a 1/2" socket, securely tighten the 3 bolts and washers (and nuts if you need to). Repeat on passenger side with remaining 3 bolts.



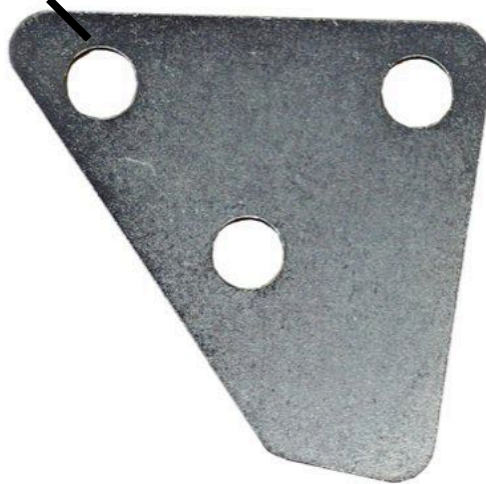
## **Door Surround Installation**

1. In Kit #1, locate the bag containing the 2 Door Surround Mounts, 2 Upper Door Surround Brackets, 6 panhead screws, and 6 washers.

**Driver Side Door Surround Mount**



**Passenger Side Door Surround Mount**



**Driver Side Upper Door Surround Bracket**



**Passenger Side Upper Door Surround Bracket**

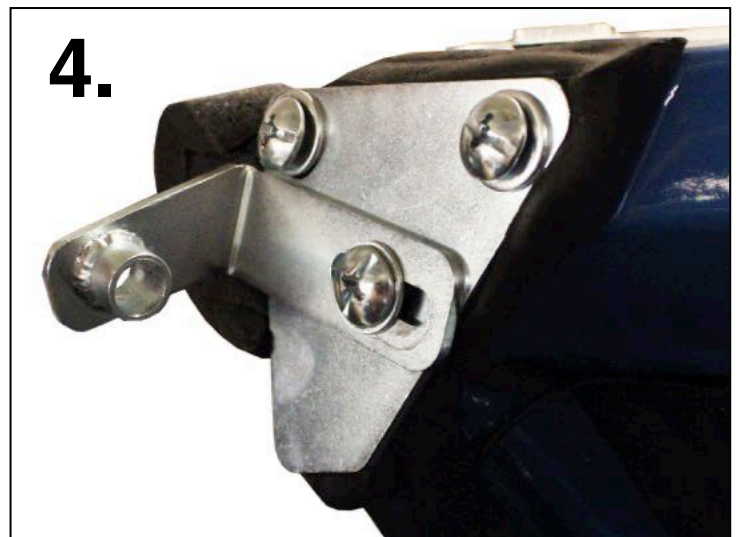




2. Open the driver side door. Locate the black plastic covering the metal where the upper portion of the door meets the windshield. Remove any screws from the black plastic piece. **\*\*The black plastic depicted below can become very deteriorated and compressed in these older vehicles. If your plastic is compressed or heavily damaged, we suggest placing a few washers on the screws between the Door Surround Mount and the plastic in order to prevent the plastic from compressing too much and not allowing the door surround to have a water-tight seal. \*\*** The weather stripping depicted to the left will be added later in the installation.



3. Using a #3 Phillips screwdriver securely mount the Door Surround Mount to the vehicle using a washer and a screw in each of the upper 2 holes.
4. Securely mount the Driver Side Upper Door Surround Bracket to the Door Surround Mount using another screw and washer. **\*\* Ensure that you have the driver side bracket, and that it is oriented and positioned as depicted below. The upper corner of the bracket should be touching the bottom of the upper left most screw, and the bracket will protrude downward.**



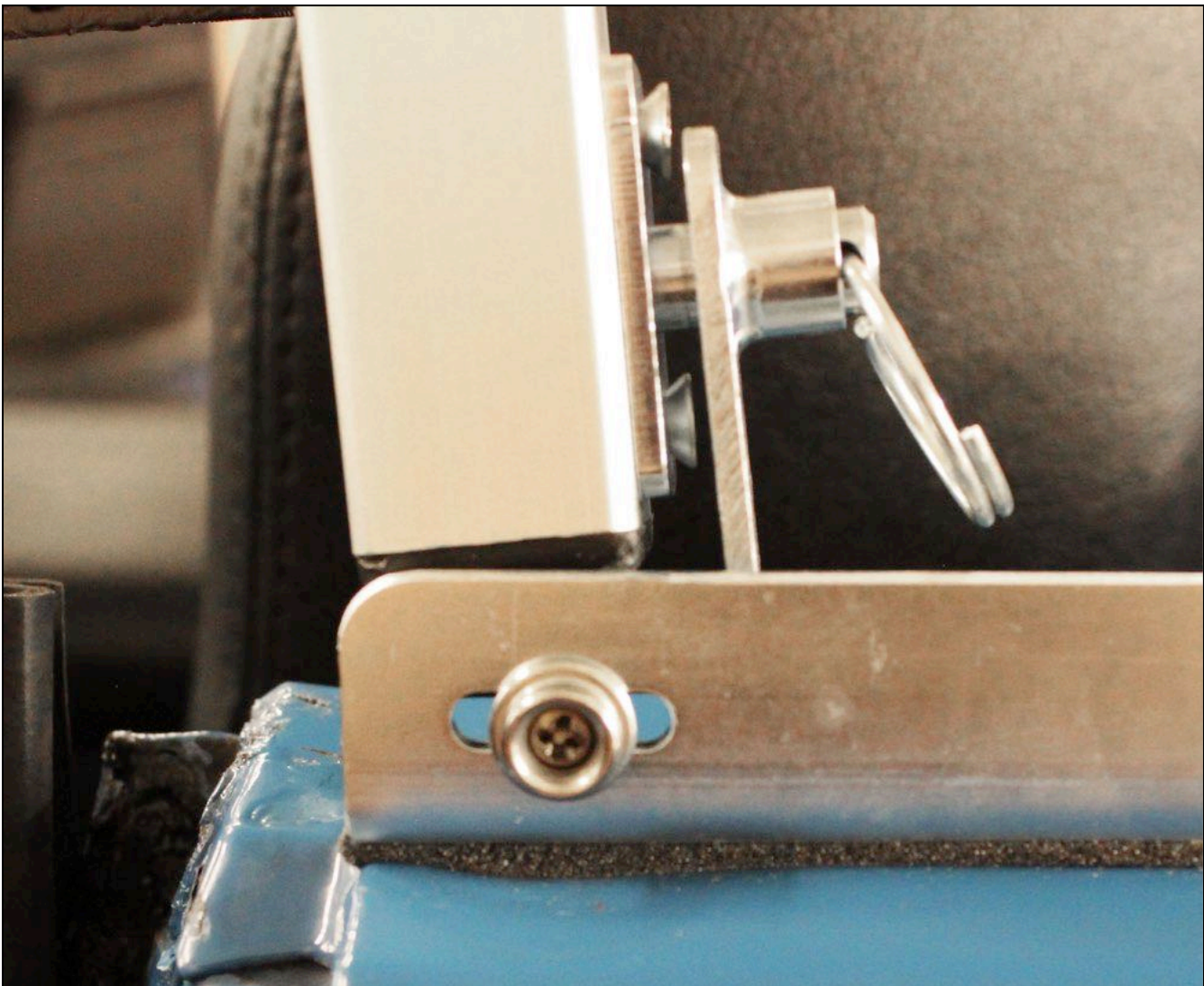
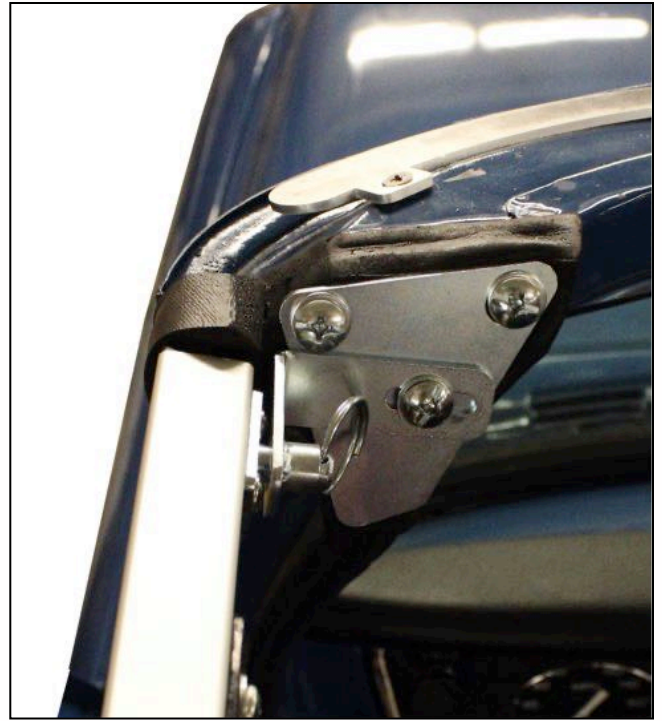
5. Locate the Driver Side Door Surround, and from Kit #1, the bag containing 4 pin brackets, 2 crossbar knobs, and 8 screws. \*\*Image below is not to scale.



6. Using a #2 Phillips screwdriver, mount 2 of the pin brackets to the pre-drilled holes on the top and the bottom of the door surround as shown. Repeat on passenger side door surround with remaining hardware. Set aside the 2 crossbar knobs for later in the installation.



7. Remove the circular safety rings from the pin brackets.
8. With the vehicle door open, place the door surround on the vehicle by placing the pin brackets into the holes in the upper and lower door surround brackets. \*\*The velcro on the plastic on the door surrounds will face the inside of the vehicle, and the door surround will follow the curvature of the window.
9. Replace the safety pins.
10. Close the door, and adjust the lower door surround bracket such that the alignment matches the photo below and secure the nuts holding the lower door surround bracket on.

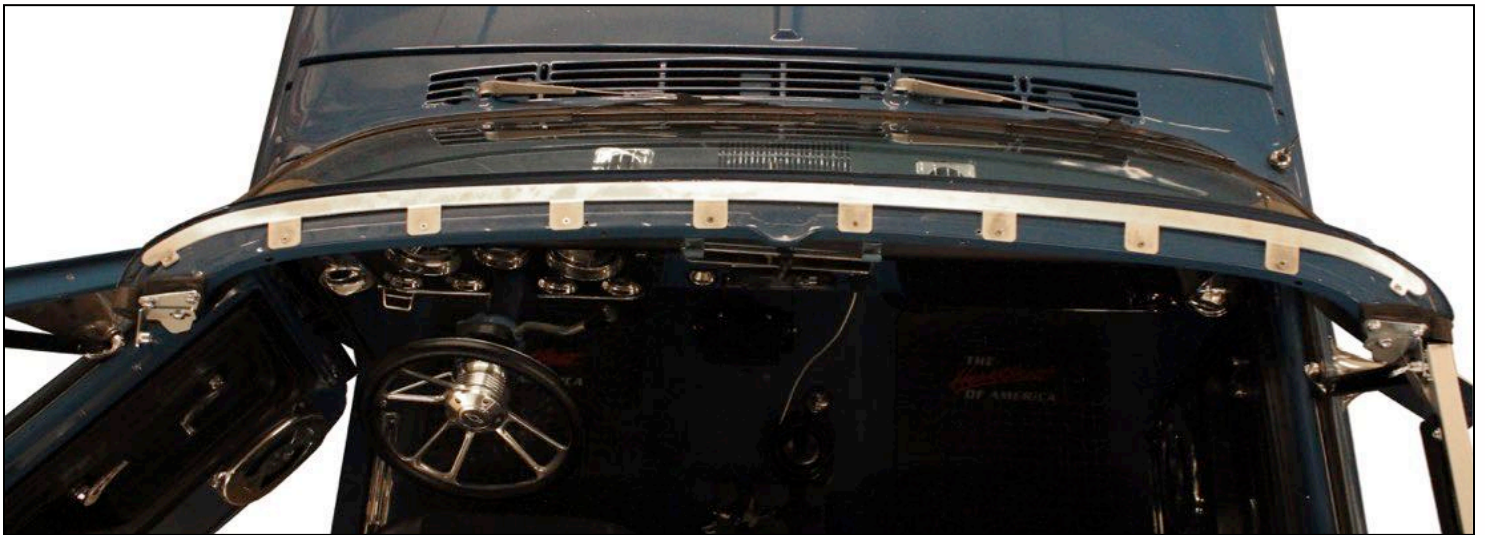


## Header Bar Installation

1. Locate the Header Bar, and from Kit #1, the small bag containing 12 flat head screws.



2. Place the Header Bar atop the vehicle's windshield as shown. Ensure that the header bar is centered on the vehicle, and that the flanges are flush with the inner edge of the windshield.



3. Once the header bar position is finalized, use a pencil to mark the drill locations for the 10 mounting holes for the bar.
4. Using a 9/64" drill bit, gently drill the 10 holes for the header bar.
5. Using a #2 Phillips screwdriver and NOT the drill, mount the header bar to the vehicle using 10 of the screws. We have provided 2 extra screws.



6. There should be a slight gap underneath the header bar. Plastic that is sewn into the canopy will need to slide under here later. \*\*The ends of the header bar can be bent down by hand to lessen the gap if needed.



## Door Surround Crossbar Installation

1. Locate the Door Surround Crossbar and the 2 black plastic crossbar knobs. \*\*Image not to scale.



2. Remove the bolts from the black plastic handle of the knobs.
3. Place the bolt through the pre-drilled hole in the door surrounds and the ends of the door surround cross bar.
4. Tighten the black plastic knobs onto the bolt, securing the crossbar to each door surround.

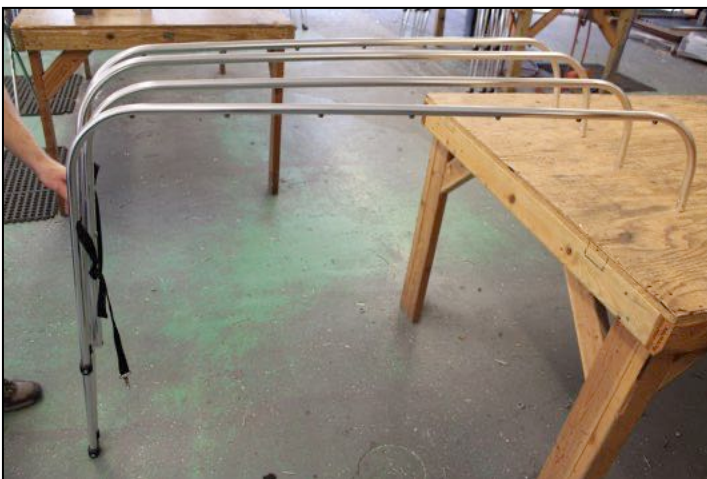


## Folding Frame Assembly and Installation

1. Locate the Rear Cross Bar (the one with the snaps) and the 2 adjustable tensioning straps with buckles.
2. Slip the small loops on the ends of the tensioning straps onto the rear cross bar such that the tensioning buckle will be oriented downward when attached to the forward cross bar as shown.

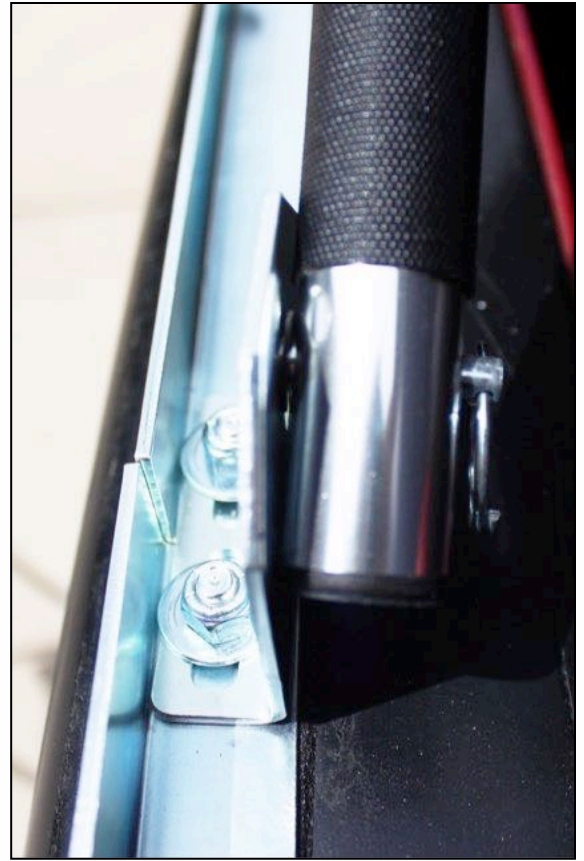


3. Join the two cross bars to the 2 folding frame uprights by coordinating the **COLORED DOTS** provided on the pieces, and ensure the push pins are locked into their holes.  
**\*\*Important: Keep fingers clear of the sharp, metal junction where the cross bars will meet the folding frame when clipping them together. Injury is likely if fingers get pinched.**



4. **\*\*Tip: It helps to stand the folding frame uprights up, and with another person, or a table to rest one end of the cross bars on, jiggle the cross bars down to join them to the uprights. (4 cross bars depicted above)**

5. Once connected, slide the 2 black bar sleeves on the forward cross bar down to meet the folding frame. These prevent the aluminum cross bars from touching the windows. When the bars are hot, direct contact can cause discoloration in the windows.
6. Remove the safety rings from the pivot pins.
7. Using the holes near the bottom of the folding frame, slide the frame onto the pivot pins. **Secure the safety rings back on.** [The most common installation error is installing the frame on backwards. Ensure that the rear cross bar will extend rearward when folding frame opens.]
8. Do NOT secure the rear safety straps yet.





## Soft Top Canopy Installation

1. With the tailgate open, lower the folding frame to the rear of the vehicle.
2. Place the canopy on the tailgate with the rear canopy snaps facing up as shown.



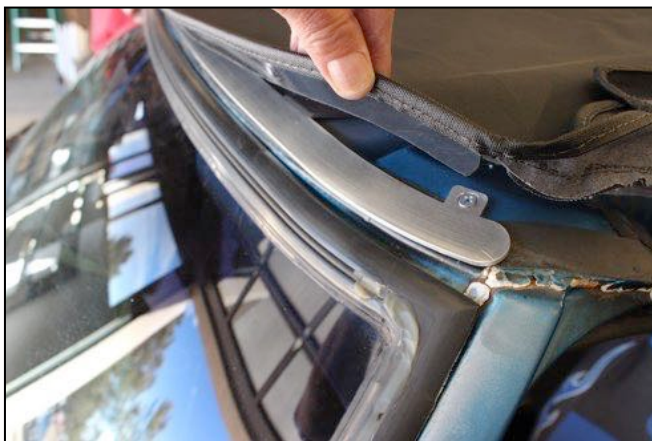
3. Place the 2 tensioning straps between the 2nd and 3rd snaps on each end of the rear cross bar as shown.



4. Stand on the tailgate and carefully lift the entire canopy and folding frame up and forward until you can rest the front of the canopy over the door surround cross bar.



5. From the ground, adjust the canopy and folding frame until it is as shown above.
6. Loosely latch the 2 rear safety straps to the rings on the plastic rear bar retainers.
7. Secure the velcro sewn into the under side of the roof around the door surround crossbar.
8. Place the plastic strip that is sewn into the front edge of the canopy underneath the windshield header bar, and ensure that the canopy is centered left to right.

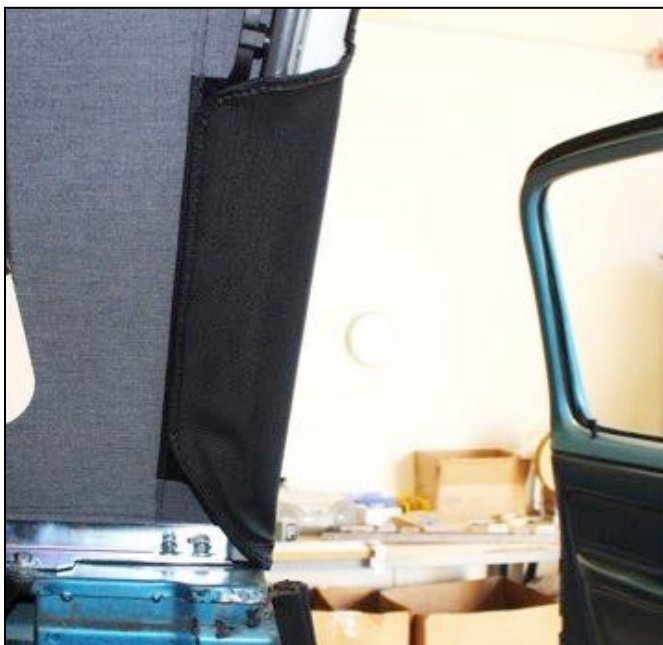


9. Undrape the sides of the canopy and rear window panel, and let them hang loosely.

10. While pulling down on the rear cross bar, tighten the 2 rear safety straps to the rings on the black plastic bar retainers (not the upper tensioning straps yet). The safety straps should be snug, not loose nor overtightened.
11. Connect the forward most snap on the side panel to its mate on the bedrail on the driver side.
12. Connect the rear most snap on the same panel to its mate on the bedrail by pulling down on the rear cross bar and pulling on the fabric if necessary.
13. Tighten the rear safety strap further to relieve excess tension on the rear snap. **\*\*Note that it is a good idea to share tension between the rear safety straps and the rear most snaps instead of having all the tension only on the snaps. This will also help with any wrinkles in the rear corners.**
14. Now snap the rest of the snaps on the driver side.
15. Repeat the above on passenger side. Note that we recommend snapping the front most and rear most snaps first each time you install the top on the vehicle. This makes it easier to snap the remaining snaps and align the canopy properly.
16. Adjust the 2 upper tensioning straps between the two rear cross bars until there is adequate upward pressure to give the canopy its taught shape.



17. Make sure that the 2 front door velcro flaps on the canopy are accessible on each side.
18. Secure the top velcro flaps under and around to the inside of the door surround velcro.
19. Secure the side velcro flaps around the rear of the door surrounds to the velcro on the fabric as shown below. Use desired tension.



20. Locate the Rear Window Bar, and from Kit #2, the (2) 12" bars, and the small bag containing 2 small self drilling screws..
21. Insert the 2 shorter bars into the ends of the longer bar with the plastic end caps facing out.
22. Standing at the rear of the vehicle, push the two ends of the bar assembly into the rear plastic bar retainers while adjusting the length of the bar assembly as necessary. It should fit securely end to end into the given space within the plastic bar retainers.
23. Center the 53" bar over the other two 12" bars.
24. Using a drill and a #2 Phillips bit, screw the 2 small self drilling screws into the pre-drilled holes to join the 3-bar assembly.



25. Now remove the bar and slide it into the sewn-in sleeve at the lower part of the rear window panel. Center the bar.



26. Join the zippers in the upper corners of the rear window panel and zip closed the window panel.
27. Clip the bar back into the plastic retainers.
28. Close the tailgate while lifting up slightly on the fabric hanging at the bottom of the window panel.

29. **\*\*Optional:** Use the provided extra strips of velcro to hold the bottom of the rear window flap to the tailgate. Wipe clean and dry the tailgate surface before placing the sticky side of the velcro onto the vehicle. The velcro strips can be placed on either side of the bracket on the tailgate, but should not be placed direct over the bracket due to wrinkling.



30. We have provided two 6" strips of weather stripping. Once you fit the canopy completely on the frame, close the two doors, and assess the water tight seal around the doors and windows with the windows rolled up. If there is a slight gap at the front of the door surrounds, remove the front section of the canopy to expose the upper door surround brackets. Place a section of the weather stripping around outer portion of the windshield as shown.



**Installation Complete**

## Retracting the Soft Top

1. Undo all side snaps.
2. Raise the rear window panel zippers all the way to the top without disconnecting them.
3. Release the rear window retainer bar. Release the front plastic from under the header.
4. Fold the front section, and the side panels up onto the roof canopy neatly.
5. Fold the rear window panel up onto the roof as shown.



6. Loosen or release the 2 rear safety straps.
7. Untuck the plastic from under the header bar.
8. Carefully make multiple folds backward from the front of the canopy until it is about the same size as when it originally came out of the box. This will ensure that the protective boot cover fits over the folded canopy.
9. While leaving the 2 safety straps out, place canopy in protective boot cover, and secure the boot cover straps.
10. **\*\*DO NOT OPERATE VEHICLE WITH SOFTOPPER IN RETRACTED POSITION WITHOUT INSTALLING THE BOOT COVER.** A parachuting effect may occur while driving without boot cover secured over canopy in its retracted position.
11. Once the canopy is in the protective boot cover, hook the 2 safety straps back onto the rear bar retainers and tighten.



## Optional Driving Configurations

1. Fully retracted with the boot cover installed and the safety straps buckled.



2. Rear window rolled up and buckled.
3. Rear window completely removed.

4. Sides and rear window rolled up. **Do not drive with the the sides rolled up without also rolling up or removing the rear window.**



5. To fully remove the Softopper once it's within the boot cover, release the 2 safety straps, remove the 2 safety rings from the pivot pins by twisting turning them, and completely remove the top. **Reinstall the safety rings.**



# Softopper Care and Maintenance

**Your top is made of the finest materials available. To keep it looking new and for product longevity and durability, it will need periodic cleaning and maintenance. All pieces are individually replaceable; call 1-800-810-7227, or order your parts online at Softopper.com.**

**Washing:** The fabric should be washed from time to time using a mild soap and warm water. Be sure to rinse all soap off the top when washing is complete.

**Vinyl Windows:** Windows should be kept clean to avoid scratching. Wash with a water-soaked sponge or cloth and a mild dishwashing detergent. **Do not use a coarse brush on the windows and never wipe the windows when they are dry.**

**COLD WEATHER:** As with all automotive and marine vinyls, extreme care must be taken when rolling up or folding the windows in cold temperatures. **Vinyl becomes stiff in cold temperatures and may crack. Retracting the Softopper in cold temperatures is not recommended and will void the warranty for the windows (see Warranty information for more detail on length of window warranties).** When opening the rear of the Softopper in cold weather, be sure to raise the zippers as high as possible so that any folding will occur to the topper fabric and not to the vinyl window.

**Zippers:** Keeping the zippers clean and lubricated with a silicone lubricant will help prevent damage and keep the zippers in smooth working condition.

**Leakage:** As with any sewn automotive top there is always a slight risk of leakage. **Right out of the box the Softopper may not be 100% waterproof.** If you experience any water seeping through at the seams, apply **Seam Sure** (supplied), on the **INSIDE** of the affected seams. It will look very messy on the outside of the canopy. **Shake** Seam Sure well and apply liberally to the inside seams concentrating on areas where needle and thread penetrated the fabric.

**Snaps:** Keep snaps clean and lubricated with a silicone lubricant to help prevent snaps from sticking to the studs. If a snap does become stuck to a stud, use a screwdriver and gently pry apart to prevent damage to the snap or top fabric. If any snaps need to be replaced due to sticking or damage please call Softopper and we can send out a small do-it-yourself repair kit.

For further information please contact:  
**Softopper LLC**, customer service  
(800) 810-7227 or (303) 304-0533



## Warranty

We warrant all of our Softoppers to be free from defects in material and workmanship for a period of one year, with the exception of vinyl windows and zippers, provided there has been normal use and proper maintenance.

**Vinyl Windows** are warranted for a period of 3 months from the date of purchase.

**Zippers** are guaranteed to be in perfect working condition when leaving the factory. Due to atmospheric conditions, dirt, sand, road grime, dust, and abrasive cleaners, etc., zippers are warranted for a period of 6 months from the date of purchase.

**Toyota 4 Runner, Jeep Wrangler, Blazer, Jimmy, Scout, Bronco, and RamCharger** side curtain windows are warranted for 45 days from the date of purchase. Retracting or closing the top when the temperature is below 40 degrees may void the warranty on the side windows, as clear vinyl plastic can crack very easily at these temperatures. Use caution when retracting the top or cleaning off the windows in freezing temperatures.

**Returns must be made within 30 days of purchase**, and must be pre-approved and have Softopper's issued RGA number attached. Any defective items must be returned with proof of purchase to Softopper 333 Centennial Pkwy B, Louisville CO 80027, **freight pre-paid**. Items returned must be carefully packed, in clean condition, with plastic windows protected from scratching and creasing. This warranty does not cover damage resulting from abuse, misuse, alteration, accident or damage in transit. Softopper's obligations under this warranty are limited to the aforementioned **repair** or **replacement** of warranty defects for which return authorization has been received during the warranty period, and Softopper SHALL NOT BE LIABLE FOR ANY INCIDENTAL OR CONSEQUENTIAL DAMAGES ARISING FROM BREACH OF THIS OR ANY IMPLIED WARRANTY. This warranty applies to the original purchaser only. All remedies under this warranty are limited to repair or replacement of any item or items found to be defective by the factory within the time period specified.

For further information or request for repair work, please contact:

**Softopper**, customer service  
(800) 810-7227 or (303) 304-0533