

SOFTOPPER®

Installation Instructions

2nd Generation Blazer & GMC Jimmy (1973-1975)

Please read instructions thoroughly before starting installation



****Remove all contents of the Softopper carefully to protect from scratches.**
Windows scratch easily! Keep protective layer placed between them when they are stacked.**

Estimated Installation Time: 1-2 hours

Beginning Note: It is easiest to do the initial installation in warmer temperatures. The fabric of the top is at its tightest when it is new. Installing it in warmer temperatures initially will ensure that the fabric is easier to work with. The fabric of the top will relax slightly with time and become easier to put on.

****Safety Notes****

Please read the following before driving with the Softopper installed:

1. It is highly recommended that the provided boot cover/storage bag is used when the topper is in its retracted position. This will prevent the top from catching in the wind and extend the longevity of the top.
2. This product is designed to shield the occupants from ordinary weather conditions.
3. DO NOT rely in any way on the soft top to contain occupants within the vehicle, or to protect against injury or death in the event of an accident or a roll-over.
4. This top will not protect the occupants from falling or flying objects. Never operate vehicle in excess of manufacturer's recommendations or specifications.

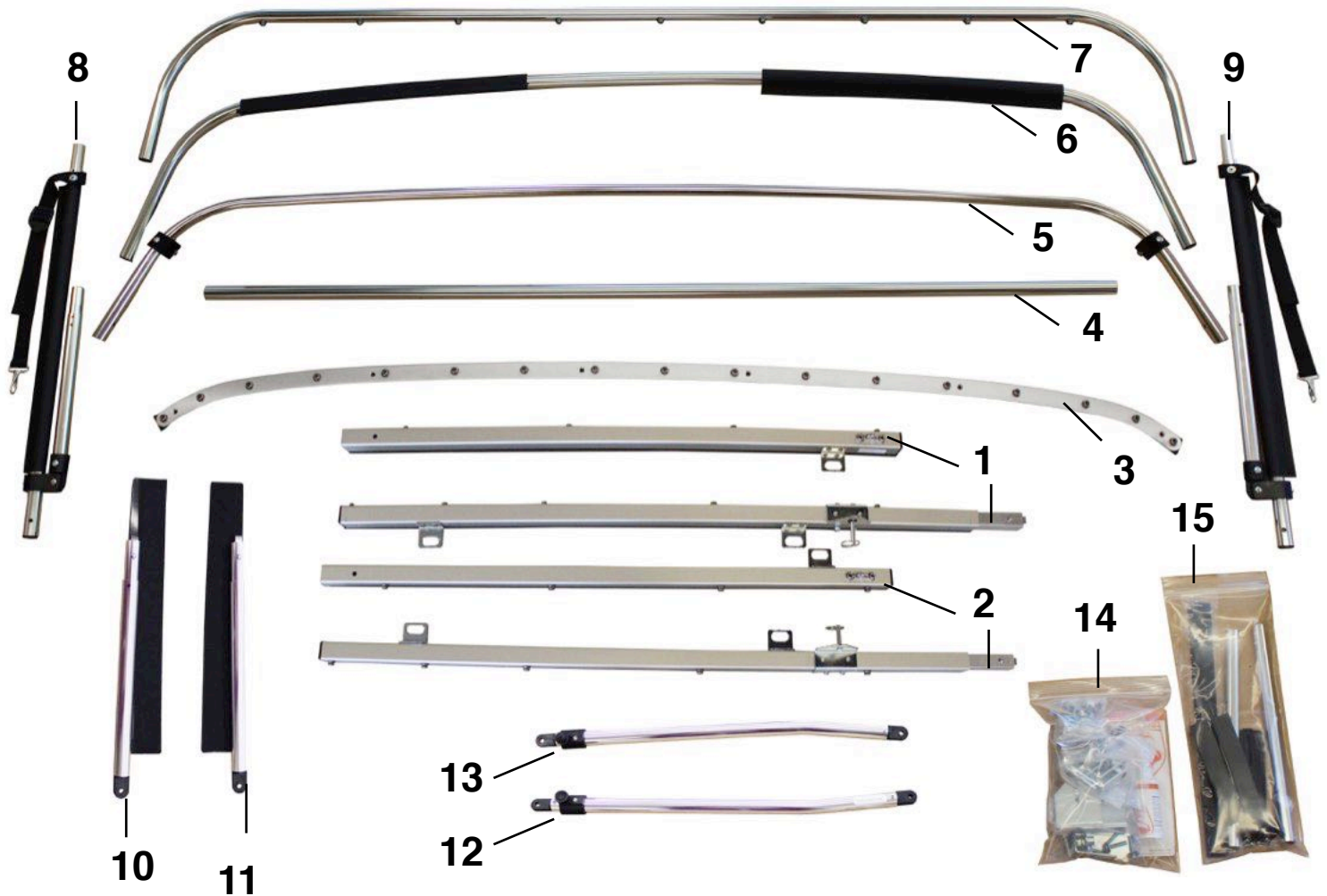
Tools needed for installation:

- 1/8" Drill Bit
- 9/64" Drill Bit
- Drill
- #2 Phillips Driver
- #2 Phillips Screwdriver
- Tape Measure
- Pencil/Marker

Table of Contents

1. Inventory.....	3
2. Hardware Installation	
1. Bedrails.....	4
2. Header Bar.....	8
3. Door Surrounds.....	10
4. Folding Frame.....	13
3. Soft Top Canopy Installation.....	15
4. Retracting the Soft Top.....	20
5. Optional Driving Configurations.....	21
6. Softopper Care and Maintenance.....	22
7. Warranty Information.....	23

Your Softopper Kit Includes the Following Pieces



1. Driver Side Front & Rear Bedrail Pieces

2. Passenger Side Front & Rear Bedrail Pieces

3. Header Bar

4. Rear Window Bar

5. Forward Crossbar

6. Middle Crossbar

7. Rear Crossbar

8. Driver Side Folding Frame Upright

9. Passenger Side Folding Frame Upright

10. Driver Side Lower Door Surround

11. Passenger Side Lower Door Surround

12. Driver Side Upper Door Surround

13. Passenger Side Upper Door Surround

14. Kit Bag #1

15. Kit Bag #2

Bedrail Installation

****Note** Colored instructions are available on our website, softopper.com, under “Installation Instructions”.**

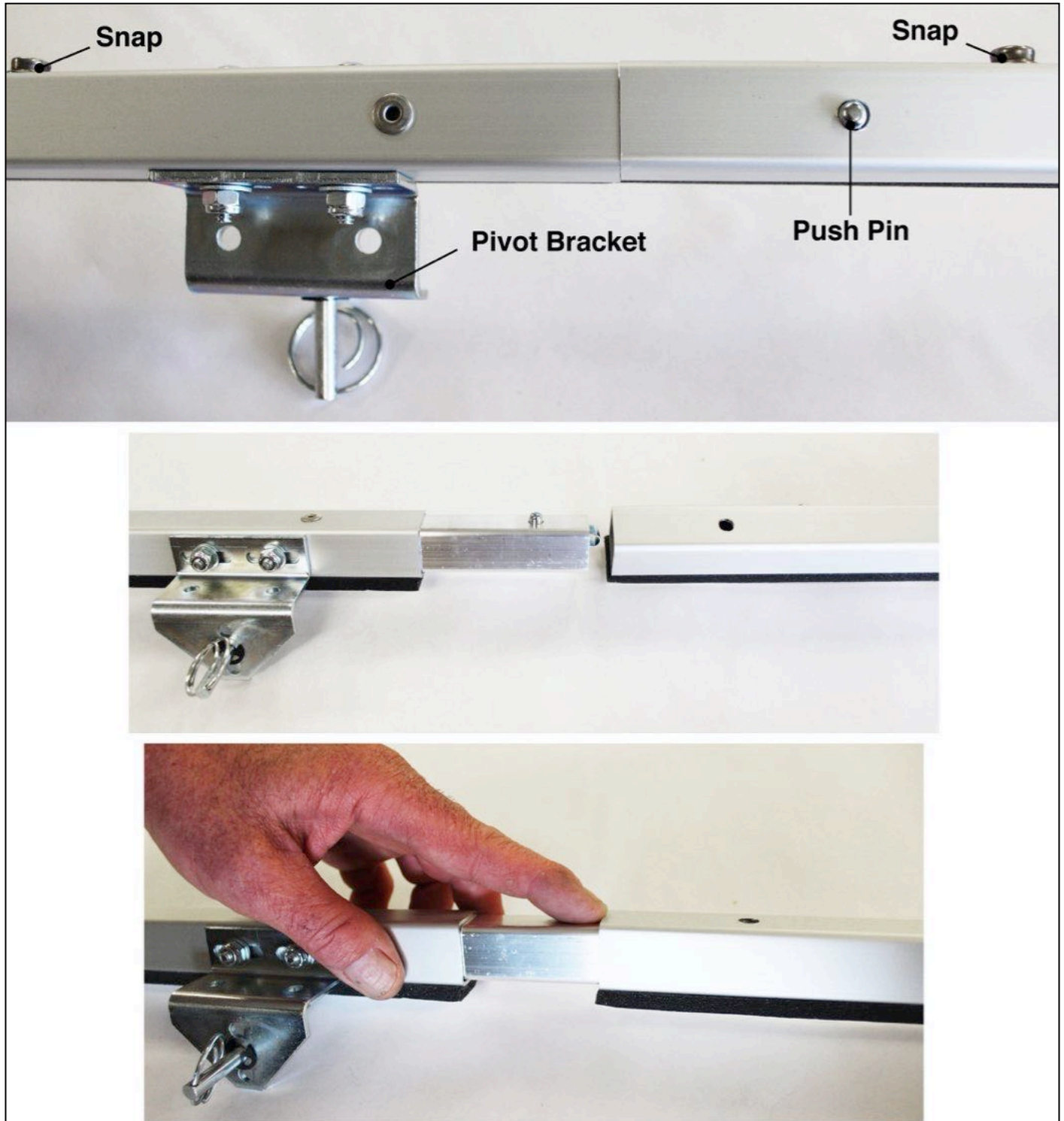
1. Locate the 2 driver side bedrails. There is a sticker which designates the driver side front bedrail. ****NOTE: The loop depicted below is not on your Blazer bedrails. There is a black, plastic deck hinge instead.****



2. Remove the white protective paper from the bottom of the bedrails that is covering the weather stripping. The weather stripping is NOT ADHESIVE, and will not stick to your truck.

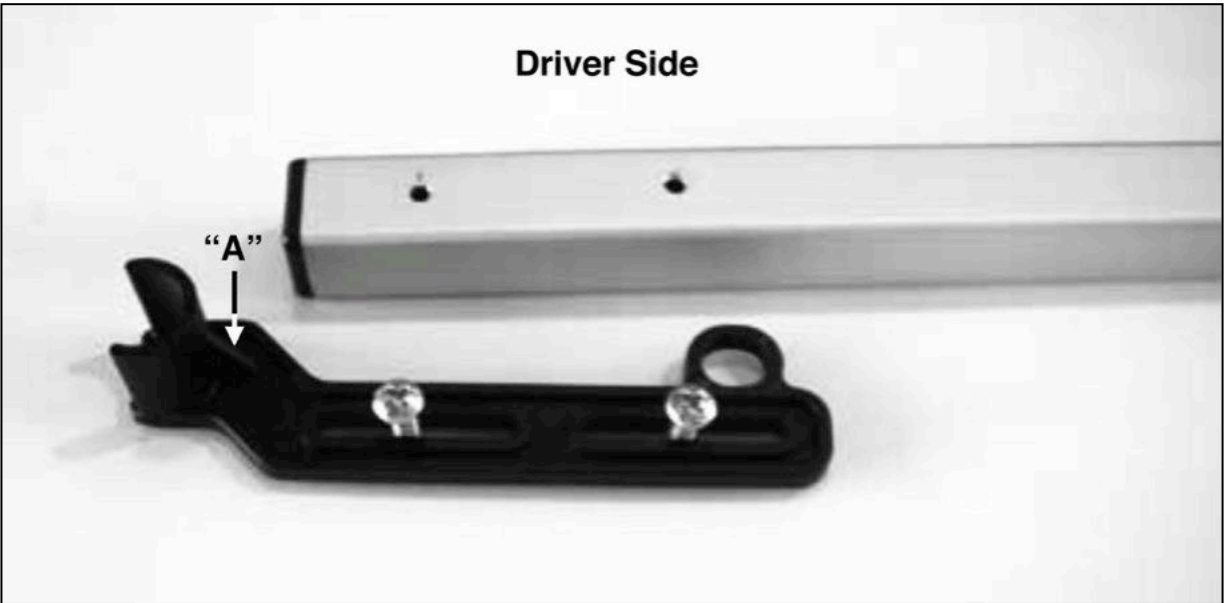


3. Join the driver side front bedrail piece and the driver side rear bedrail piece by pressing down on the push pin, as shown (bedrail/pivot bracket style may differ), and sliding the rear bedrail into the front bedrail until the push pin finds the hole and pops through. Make sure that you have the driver side rear bedrail piece by ensuring that the snaps on the front and rear bedrails are facing the same direction.

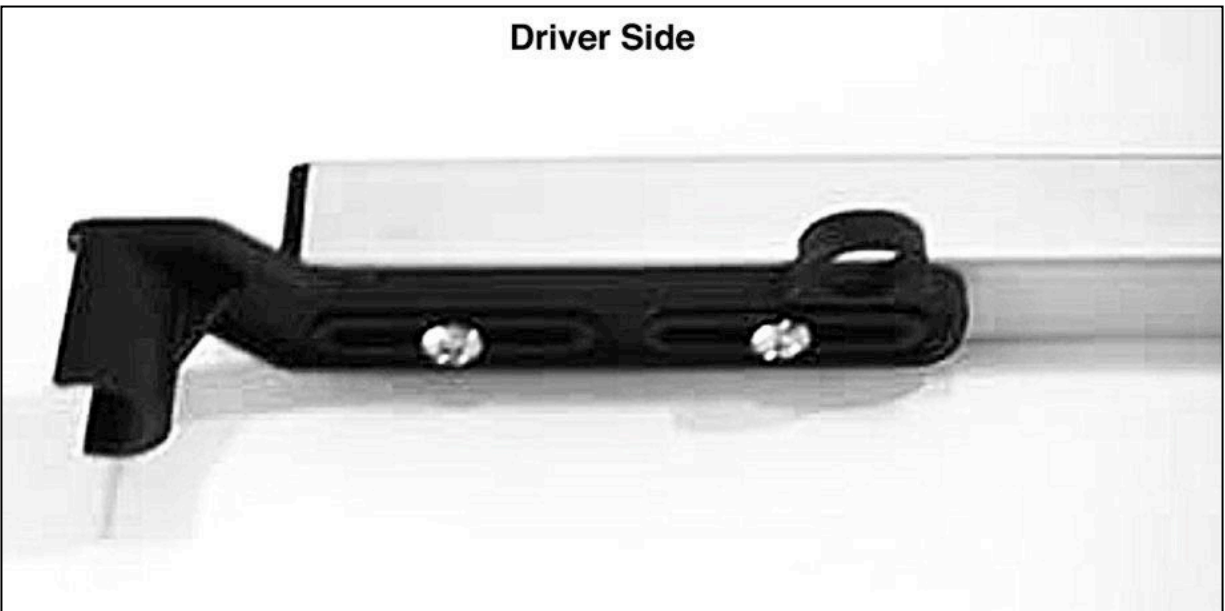


4. Repeat for passenger side bedrails.

5. Locate the 2 black, plastic rear bar retainers and the small bag containing hardware.
6. The plastic retainers are marked “A” and “B”. “A” is the driver side piece, and “B” is passenger side piece. The retainer slot should face inward and the ring should be up as shown.

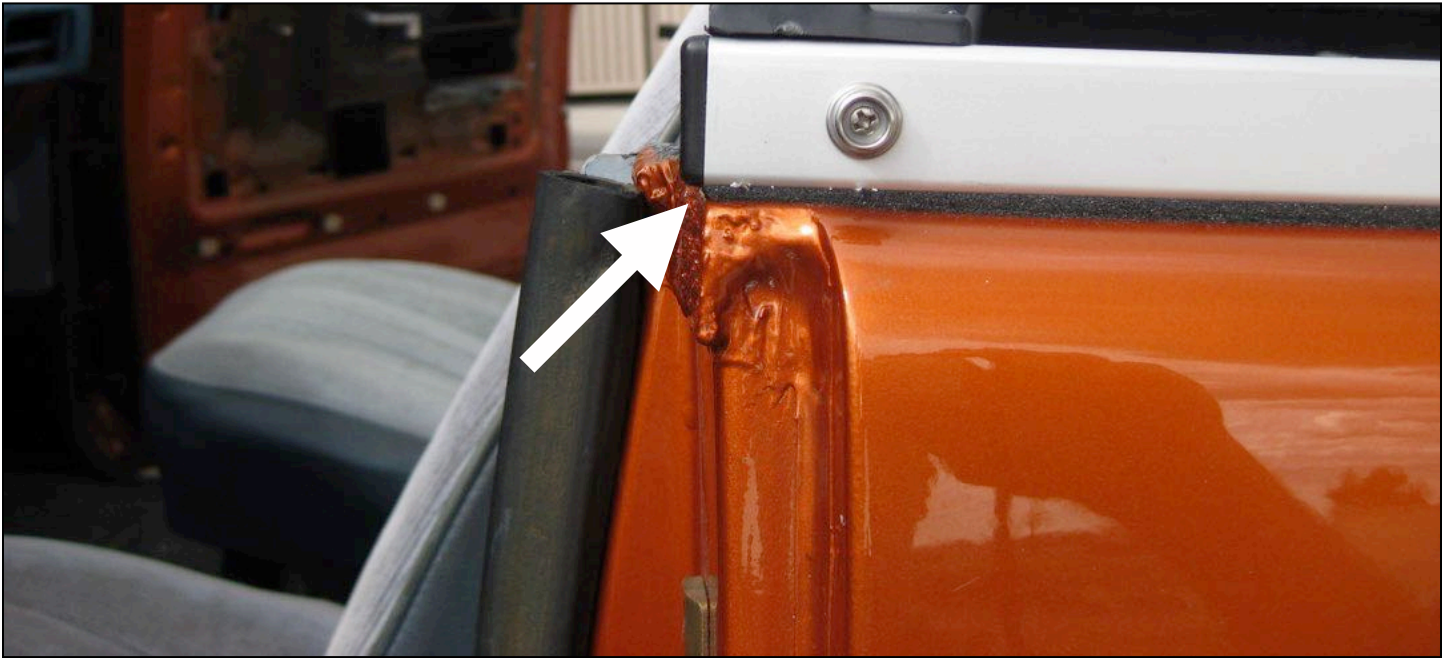


7. Using the (4) #12 x 3/4” panhead screws and a #3 Phillips screwdriver, mount the rear bar retainers to the pre-drilled holes on the back end of the rear bedrail as shown. Center the screws in the slots.



8. Repeat on passenger side bedrail with the plastic retainer marked “B”.
9. Save the 2 remaining, self drilling screws in the bag for later in the installation process.
10. Using the hard top bolts that you previously removed from the vehicle or the supplied 1” Hex bolts and washers, mount the bedrails onto the vehicle. Center the bolts in the slots and fasten securely. Make sure that the snaps face outward and the pivot bracket faces inward.

11. Using the hard top bolts that you previously removed from the vehicle, or the supplied 1" Hex bolts and washers, mount the bedrails onto the vehicle. Align the bolts in the slots such that the front of each bedrail is flush with or just overhanging the front of the vehicle rail, and fasten securely.



Header Bar

1. Locate the header bar and the small bag containing 8 Flathead screws.



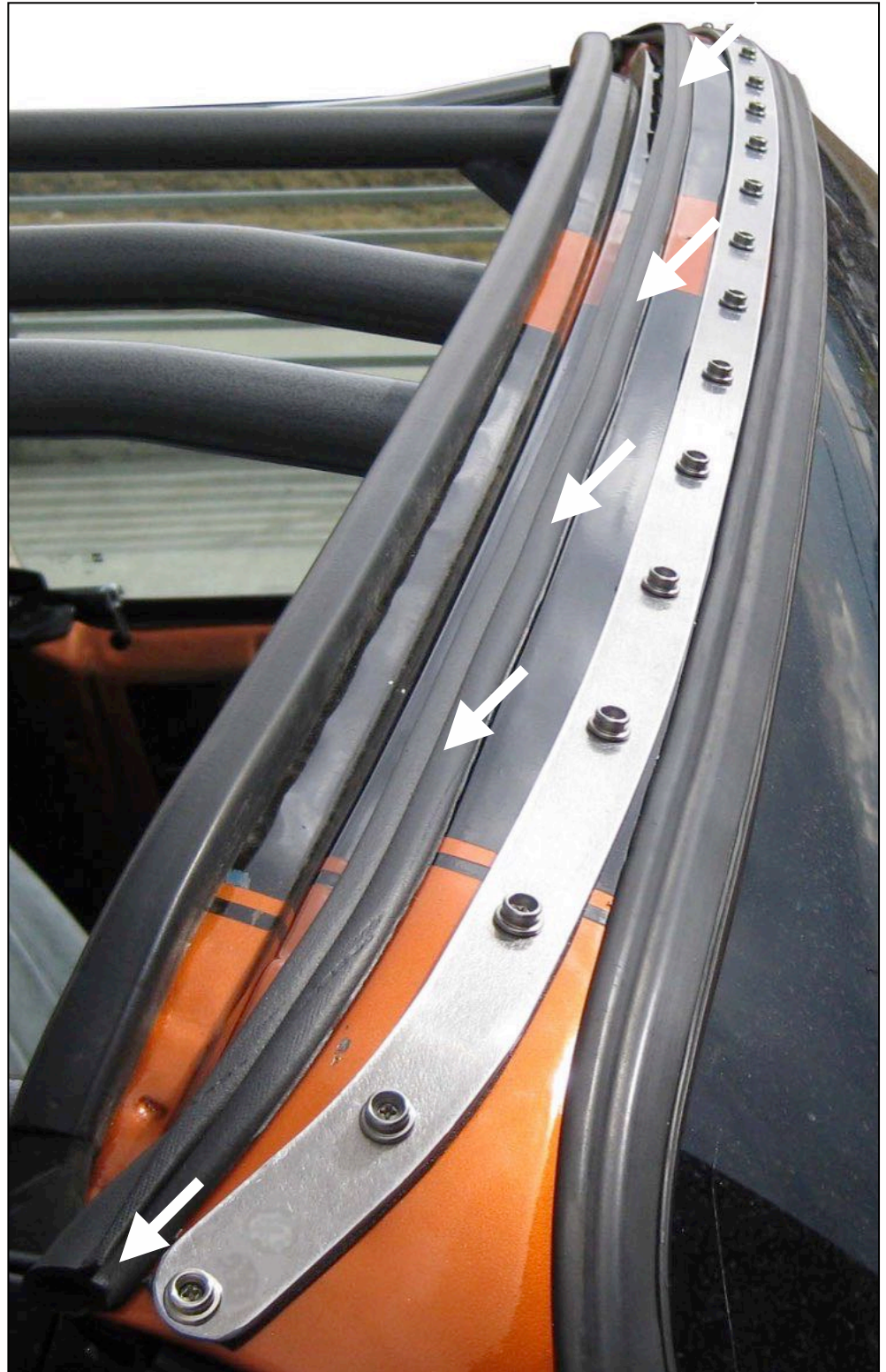
2. Remove the white paper from the bottom of the weather stripping on the header bar. This weather stripping is adhered to the header bar and **WILL NOT STICK** to your vehicle.
3. Measure, as many times as it takes, from side to side across the top of your windshield header bar on your vehicle to find the exact center of the vehicle, and mark it with a marker.
4. Do the same to find the center of our provided header bar.
5. Align the center of the provided header bar with the center of the windshield header.
6. With the weather stripping facing down, place the header bar 1/8" behind the rubber at the top of the windshield.



7. Make sure the header bar is sitting symmetrical from side to side. Mark the 6 drilling locations through the pre-drilled holes in the header bar while maintaining the 1/8" spacing from the rubber of the windshield until the header bar begins to curve. Remove the header bar from the vehicle.

8. Using the 9/64” drill bit, drill the holes marked for the header bar.
9. Place the header atop the windshield again, and use a #2 Phillips SCREWDRIVER, NOT A DRILL, to install the 6 screws for the header bar. These can strip or break easily, so 2 extra screws are provided. Do not over tighten.

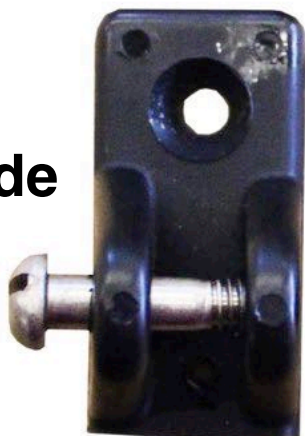
10. On the vehicle, use a 50/50 alcohol and water mix (or any similar cleaning solution) to thoroughly clean the rear portion of the windshield header behind the header bar.
11. Adhere the provided 72” strip of bulb seal to the rear edge of the windshield header with the little flange on the bulb seal facing down. Make sure the bulb seal goes from the very edge at each side of the windshield header.
****TIP:** Remove the red plastic film that covers the adhesive on the bulb seal only a few inches at a time as you adhere it to the vehicle to prevent it from accidentally sticking to other surfaces.** We have provided more bulb seal than necessary.



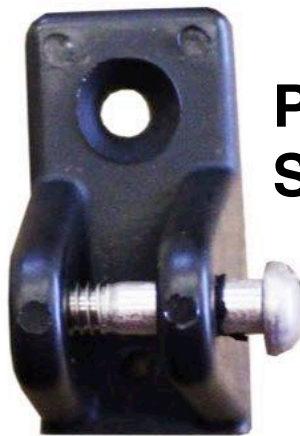
Door Surround Installation

1. Locate the kit bag containing 2 black, plastic deck hinges, 2 flathead screws, and 2 small self drilling screws.
2. The deck hinges are side specific, so ensure that you install them on the correct side of the vehicle.

Driver Side



Passenger Side



3. Place the deck hinges in the upper corners of the windshield header. Align them as shown, with the bottom edge of the deck hinge flush with the bottom corner of the windshield header, and roughly the same tilted angle in as the outside edge of the windshield header.

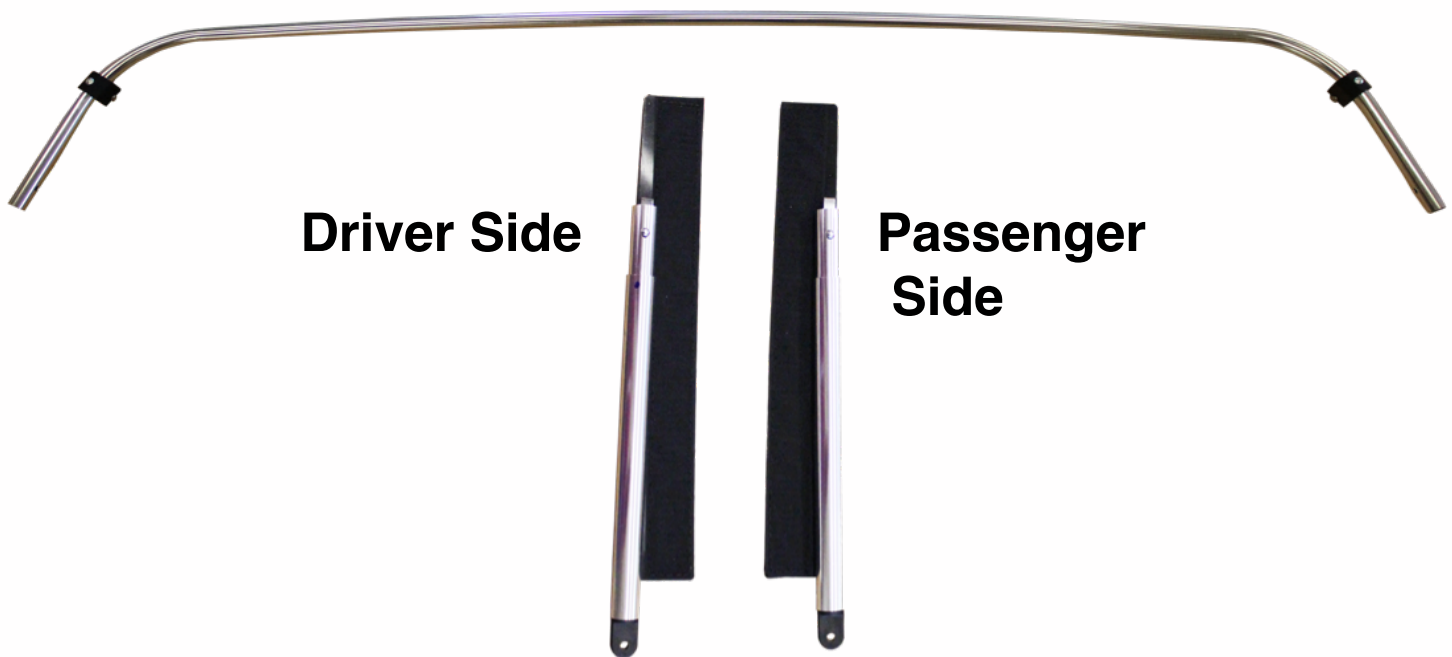


4. Mark the drilling locations for the 2 holes of each deck hinge.

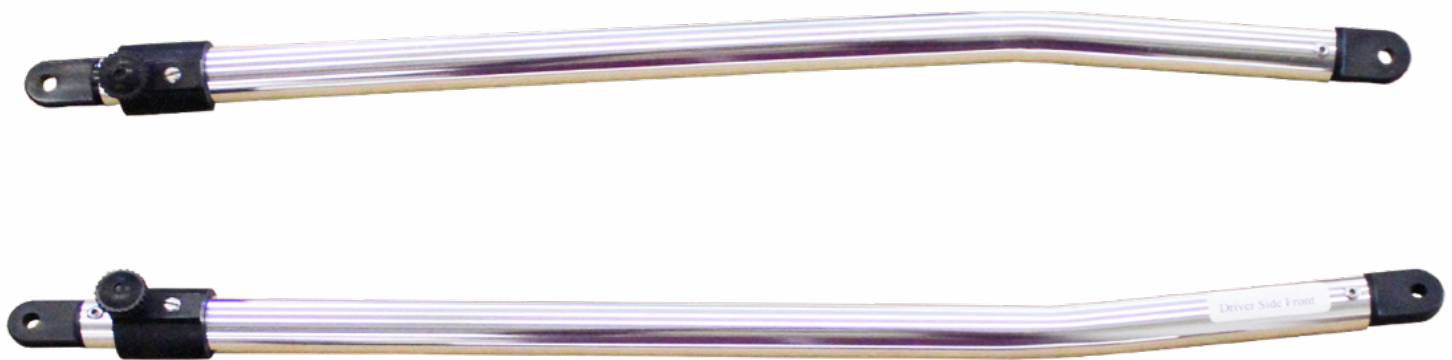
5. Using a 1/8" drill bit, drill the upper hole for the deck hinges and the #10 flathead screws. This bit is a little too small for the hole for the #10 screws, but attempt to screw in the the flathead screw before boring out the hole any further. **DO NOT USE A DRILL** to install the #10 screws. Use a #2 Phillips screwdriver.
6. Install the deck hinges with the top hole and the #10 screws only at first.
7. Align the deck hinge bottom hole with the marked location from earlier, and using a #2 driver and drill, install the 2 small self drilling screws into the bottom of the deck hinges.



8. Locate the Forward Crossbar that has the 2 black plastic jaw slides installed on it, as well as the Driver and Passenger Side Lower Door Surrounds.



9. Join the 2 Lower Door Surrounds to each end of the Forward Crossbar by pushing in the push pins at the top end of the door surrounds and sliding them into the crossbar. **The driver side of the crossbar will have a colored dot near the drilled hole that matched the dot on the door surround bar.
10. Install this assembly onto the vehicle by joining the bottom of each door surround with the deck hinge that is pre-installed onto the front of each bedrail. Ensure that the velcro plastic on each door surround points FORWARD.
11. Locate the driver and passenger side Upper Door Surrounds.



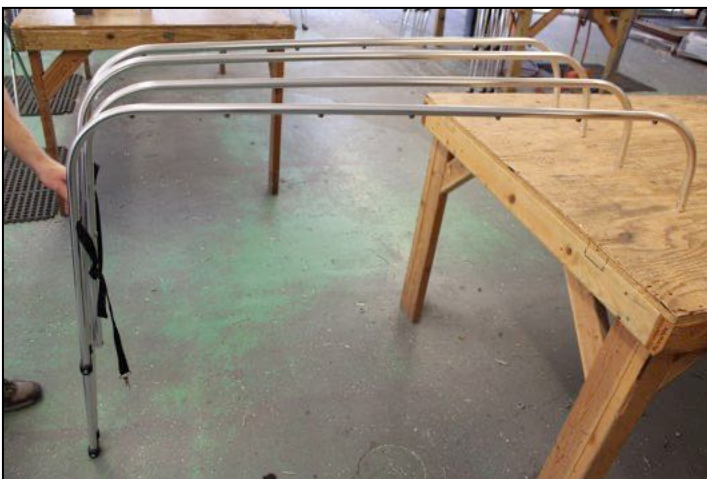
12. Insert each front end of the upper door surrounds into the deck hinges previously installed onto the windshield header. **There is a note which dictates the driver side front, inside of the driver side bar**
13. Insert the rear end of each bar into the jaw slides on both sides of the forward crossbar. The angle of this assembly is adjustable to the angle of your window using the knobs on the upper door surrounds.

Folding Frame Assembly and Installation

1. Locate the Rear Cross Bar (the one with the snaps) and the 2 adjustable tensioning straps with buckles.
2. Slip the small loops on the ends of the tensioning straps onto the rear cross bar such that the tensioning buckle will be oriented downward when attached to the forward cross bar as shown.

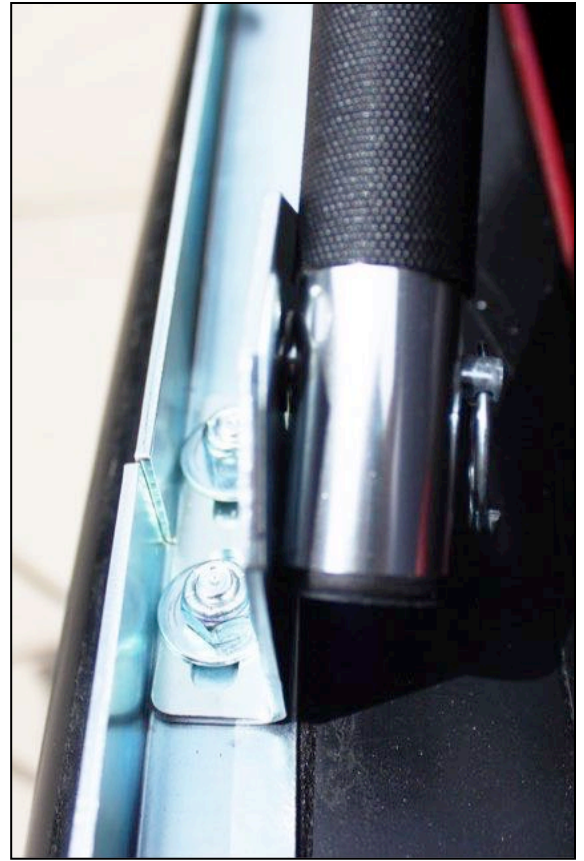


3. Join the two cross bars to the 2 folding frame uprights by coordinating the **COLORED DOTS** provided on the pieces, and ensure the push pins are locked into their holes.
****Important: Keep fingers clear of the sharp, metal junction where the cross bars will meet the folding frame when clipping them together. Injury is likely if fingers get pinched.**



4. ****Tip: It helps to stand the folding frame uprights up, and with another person, or a table to rest one end of the cross bars on, jiggle the cross bars down to join them to the uprights. (4 cross bars depicted above)**

5. Once connected, slide the 2 black bar sleeves on the forward cross bar down to meet the folding frame. These prevent the aluminum cross bars from touching the windows. When the bars are hot, direct contact can cause discoloration in the windows.
6. Remove the safety rings from the pivot pins.
7. Using the holes near the bottom of the folding frame, slide the frame onto the pivot pins. **Secure the safety rings back on.** [The most common installation error is installing the frame on backwards. Ensure that the rear cross bar will extend rearward when folding frame opens.]
8. Do NOT secure the rear safety straps yet.



Soft Top Canopy Installation

1. With the tailgate open, lower the folding frame to the rear of the vehicle.
2. Place the canopy on the tailgate with the rear canopy snaps facing up as shown.



3. Place the 2 tensioning straps between the 2nd and 3rd snaps on each end of the rear cross bar as shown.



4. Stand on the tailgate and carefully lift the entire canopy and folding frame up and forward until you can rest the front of the canopy over the door surround cross bar.



5. From the ground, adjust the canopy and folding frame until it is as shown above.
6. Loosely latch the 2 rear safety straps to the rings on the plastic rear bar retainers.
7. Secure the velcro flap that is sewn into the under side of the roof around the door surround crossbar.
8. Snap the front of the canopy to the header bar by snapping the 2 outer most snaps first in order to utilize the stretch in the fabric to make it easier.
9. Undrape the sides of the canopy and rear window panel, and let them hang loosely.
10. While pulling down on the rear cross bar, tighten the 2 rear safety straps to the rings on the black plastic bar retainers (not the upper tensioning straps yet). The safety straps should be snug, not loose nor overtightened.
11. Connect the forward most snap on the side panel to its mate on the bedrail on the driver side.
12. Connect the rear most snap on the same panel to its mate on the bedrail by pulling down on the rear cross bar and pulling on the fabric if necessary.
13. Tighten the rear safety strap further to relieve excess tension on the rear snap. ****Note that it is a good idea to share tension**

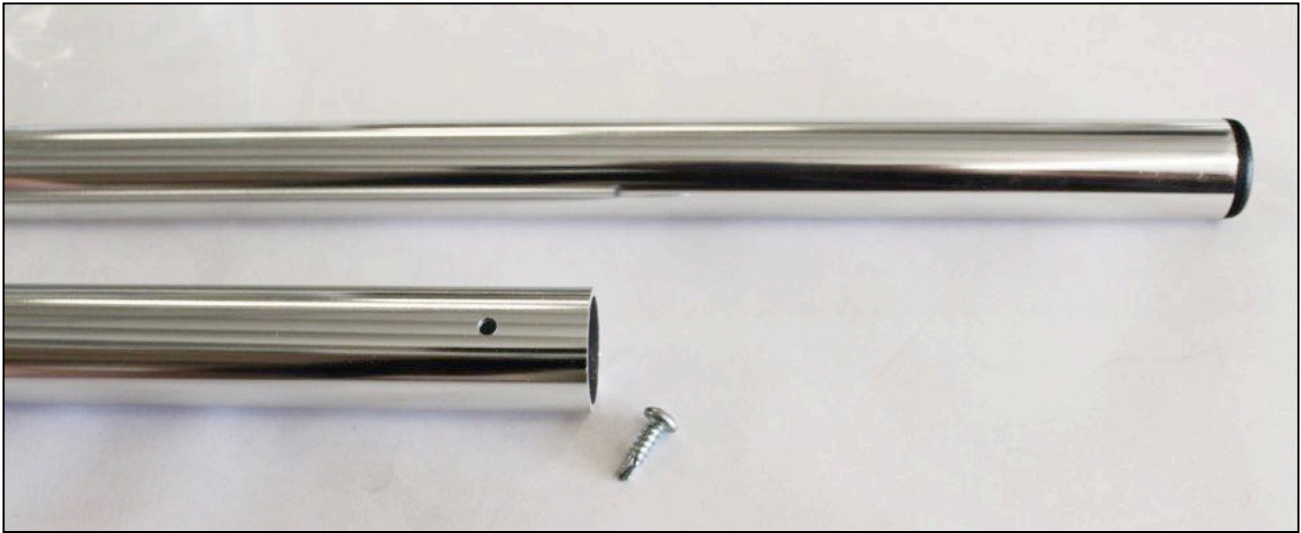


between the rear safety straps and the rear most snaps instead of having all the tension only on the snaps. This will also help with any wrinkles in the rear corners.

14. Now snap the rest of the snaps on the driver side.
15. Repeat the above on passenger side. Note that we recommend snapping the front most and rear most snaps first each time you install the top on the vehicle. This makes it easier to snap the remaining snaps and align the canopy properly.
16. Adjust the 2 upper tensioning straps between the two rear cross bars until there is adequate upward pressure to give the canopy its taught shape.
17. Make sure that the 2 front door velcro flaps on the canopy are accessible on each side.
18. Secure the top velcro flaps under and around to the inside of the door surround velcro.
19. Secure the side velcro flaps around the rear of the door surrounds to the velcro on the fabric as shown below. Use desired tension.



20. Locate the straight Rear Window Bar, the (2) 12" bars, and the two remaining self drilling screws that were in the bag containing the black plastic rear bar retainers.



21. Insert the 2 shorter bars into the ends of the longer bar with the plastic end caps facing out.
22. Standing at the rear of the vehicle, push the two ends of the bar assembly into the rear plastic bar retainers while adjusting the length of the bar assembly as necessary. It should fit securely end to end into the given space within the plastic bar retainers.
23. Center the long bar over the other two 12" bars.
24. Using a drill and a #2 Phillips bit, screw the 2 small self drilling screws into the pre-drilled holes to join the 3-bar assembly.
25. Now remove the bar and slide it into the sewn-in sleeve at the lower part of the rear window panel. Center the bar.
26. Join the zippers in the upper corners of the rear window panel and zip closed the window panel.
27. Clip the bar back into the plastic retainers.
28. Close the tailgate while lifting up slightly on the fabric hanging at the bottom of the window panel.



29. ****Optional:** Use the provided extra strips of velcro to hold the bottom of the rear window flap to the tailgate. Wipe clean and dry the tailgate surface before placing the sticky side of the velcro onto the vehicle. Before putting excessive tension on the velcro, we recommend letting it adhere for **24 hours**.

Installation Complete



Retracting the Soft Top

1. Undo all side snaps.
2. Raise the rear window panel zippers all the way to the top without disconnecting them.
3. Release the rear window retainer bar.
4. Place the side panels up onto the roof canopy neatly.
5. Place the rear window panel up onto the roof as shown.



6. Loosen or release the 2 rear safety straps.
7. Undo all cab roof snaps.
8. Carefully make multiple folds backward from the front of the canopy until it is about the same size as when it originally came out of the box. This will ensure that the protective boot cover fits over the folded canopy.
9. While leaving the 2 safety straps out, place canopy in protective boot cover, and secure the boot cover straps.



10. ****DO NOT OPERATE VEHICLE WITH SOFTOPPER IN RETRACTED POSITION WITHOUT INSTALLING THE BOOT COVER.** A parachuting effect may occur while driving without boot cover secured over canopy in its retracted position.
11. Once the canopy is in the protective boot cover, hook the 2 safety straps back onto the rear bar retainers and tighten.

Optional Driving Configurations

1. Fully retracted with the boot cover installed and the safety straps buckled.



2. Rear window rolled up and buckled.
3. Rear window completely removed.

4. Sides and rear window rolled up. **Do not drive with the the sides rolled up without also rolling up or removing the rear window.**



5. To fully remove the Softopper once it's within the boot cover, release the 2 safety straps, remove the 2 safety rings from the pivot pins by twisting turning them, and completely remove the top. **Reinstall the safety rings.**



Softopper Care and Maintenance

Your top is made of the finest materials available. To keep it looking new and for product longevity and durability, it will need periodic cleaning and maintenance. All pieces are individually replaceable; call 1-800-810-7227, or order your parts online at Softopper.com.

Washing: The fabric should be washed from time to time using a mild soap and warm water. Be sure to rinse all soap off the top when washing is complete.

Vinyl Windows: Windows should be kept clean to avoid scratching. Wash with a water-soaked sponge or cloth and a mild dishwashing detergent. **Do not use a coarse brush on the windows and never wipe the windows when they are dry.**

COLD WEATHER: As with all automotive and marine vinyls, extreme care must be taken when rolling up or folding the windows in cold temperatures. **Vinyl becomes stiff in cold temperatures and may crack. Retracting the Softopper in cold temperatures is not recommended and will void the warranty for the windows (see Warranty information for more detail on length of window warranties).** When opening the rear of the Softopper in cold weather, be sure to raise the zippers as high as possible so that any folding will occur to the topper fabric and not to the vinyl window.

Zippers: Keeping the zippers clean and lubricated with a silicone lubricant will help prevent damage and keep the zippers in smooth working condition.

Leakage: As with any sewn automotive top there is always a slight risk of leakage. **Right out of the box the Softopper may not be 100% waterproof.** If you experience any water seeping through at the seams, apply **Seam Sure** (supplied), on the **INSIDE** of the affected seams. It will look very messy on the outside of the canopy. **Shake** Seam Sure well and apply liberally to the inside seams concentrating on areas where needle and thread penetrated the fabric.

Snaps: Keep snaps clean and lubricated with a silicone lubricant to help prevent snaps from sticking to the studs. If a snap does become stuck to a stud, use a screwdriver and gently pry apart to prevent damage to the snap or top fabric. If any snaps need to be replaced due to sticking or damage please call Softopper and we can send out a small do-it-yourself repair kit.

For further information please contact:
Softopper LLC, customer service
(800) 810-7227 or (303) 304-0533

Warranty

We warrant all of our Softoppers to be free from defects in material and workmanship for a period of one year, with the exception of vinyl windows and zippers, provided there has been normal use and proper maintenance.

Vinyl Windows are warranted for a period of 3 months from the date of purchase.

Zippers are guaranteed to be in perfect working condition when leaving the factory. Due to atmospheric conditions, dirt, sand, road grime, dust, and abrasive cleaners, etc., zippers are warranted for a period of 6 months from the date of purchase.

Toyota 4 Runner, Jeep Wrangler, Blazer, Jimmy, Scout, Bronco, and RamCharger side curtain windows are warranted for 45 days from the date of purchase. Retracting or closing the top when the temperature is below 40 degrees may void the warranty on the side windows, as clear vinyl plastic can crack very easily at these temperatures. Use caution when retracting the top or cleaning off the windows in freezing temperatures.

Returns must be made within 30 days of purchase, and must be pre-approved and have Softopper's issued RGA number attached. Any defective items must be returned with proof of purchase to Softopper 333 Centennial Pkwy B, Louisville CO 80027, **freight pre-paid**. Items returned must be carefully packed, in clean condition, with plastic windows protected from scratching and creasing. This warranty does not cover damage resulting from abuse, misuse, alteration, accident or damage in transit. Softopper's obligations under this warranty are limited to the aforementioned **repair** or **replacement** of warranty defects for which return authorization has been received during the warranty period, and Softopper SHALL NOT BE LIABLE FOR ANY INCIDENTAL OR CONSEQUENTIAL DAMAGES ARISING FROM BREACH OF THIS OR ANY IMPLIED WARRANTY. This warranty applies to the original purchaser only. All remedies under this warranty are limited to repair or replacement of any item or items found to be defective by the factory within the time period specified.

For further information or request for repair work, please contact:

Softopper, customer service
(800) 810-7227 or (303) 304-0533